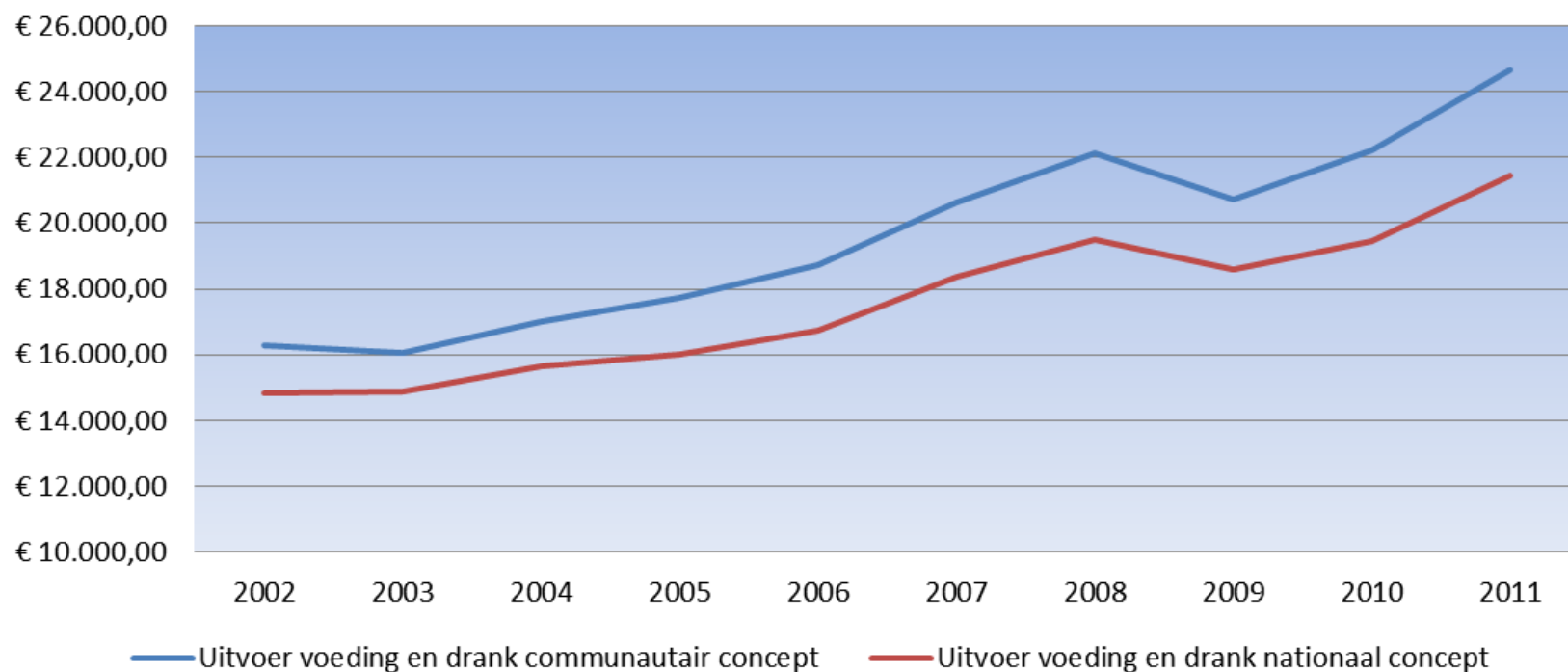


# **Het in kaart brengen van de Belgische export van levensmiddelen**

**Luc OGIERS**  
Adviseur

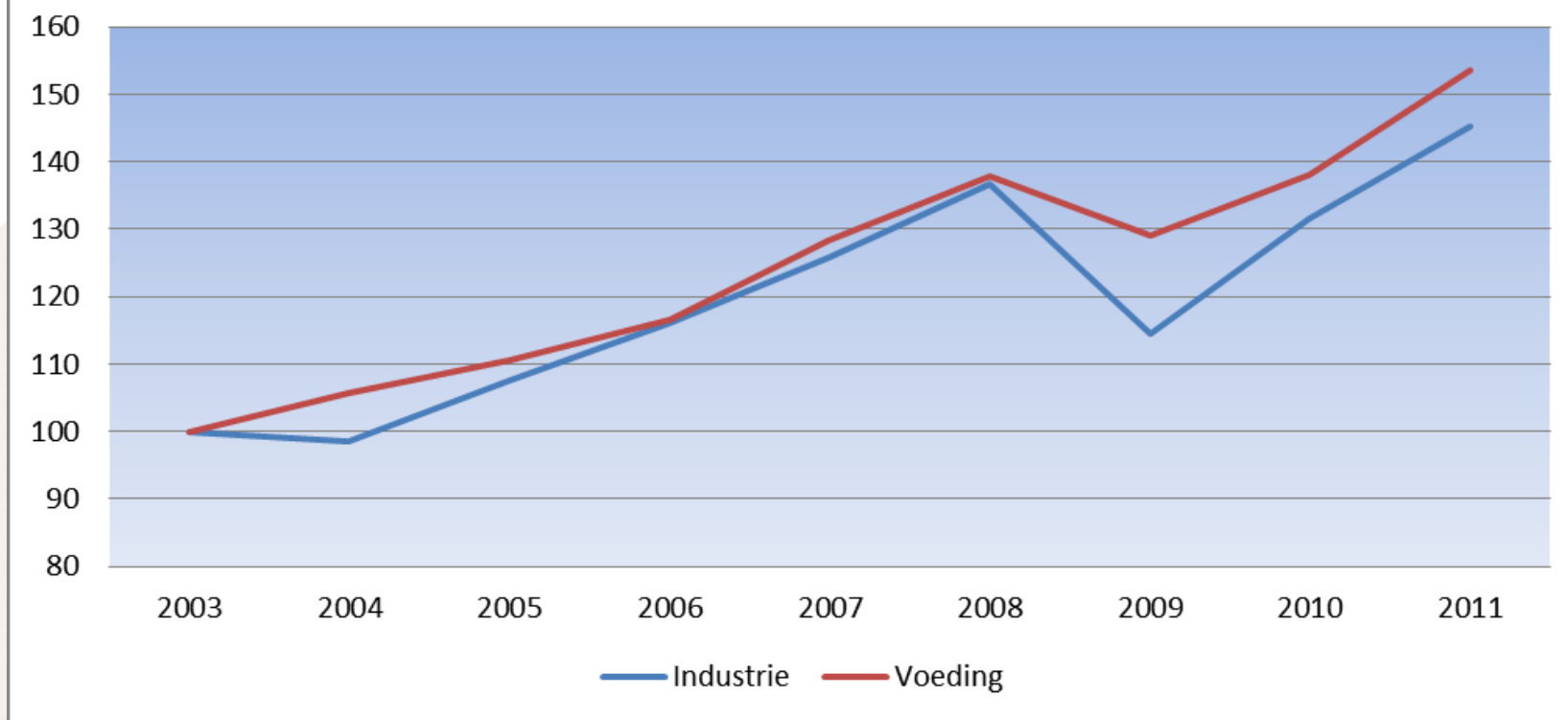
**DG Economisch Potentieel**  
Dir. Agrovoedingsnijverheid

### Grafiek 1 : Evolutie Export - Communautair en nationaal concept



Communautair : goederen die de landsgrenzen overschrijden  
Nationaal : uitvoerbewegingen waarbij ingezetenen betrokken

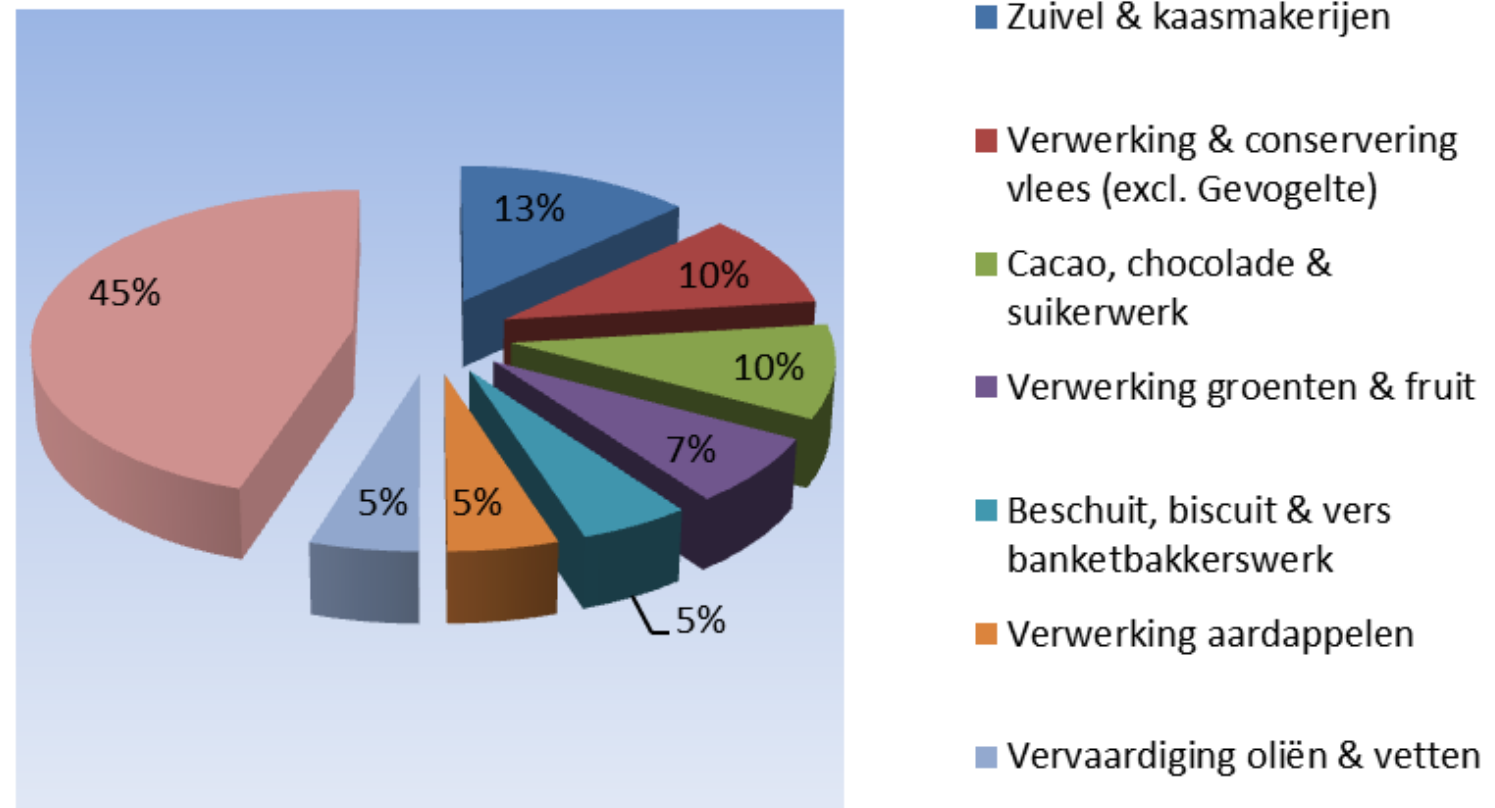
**Grafiek 2 : Evolutie industrie - voeding**  
(2003 = 100)



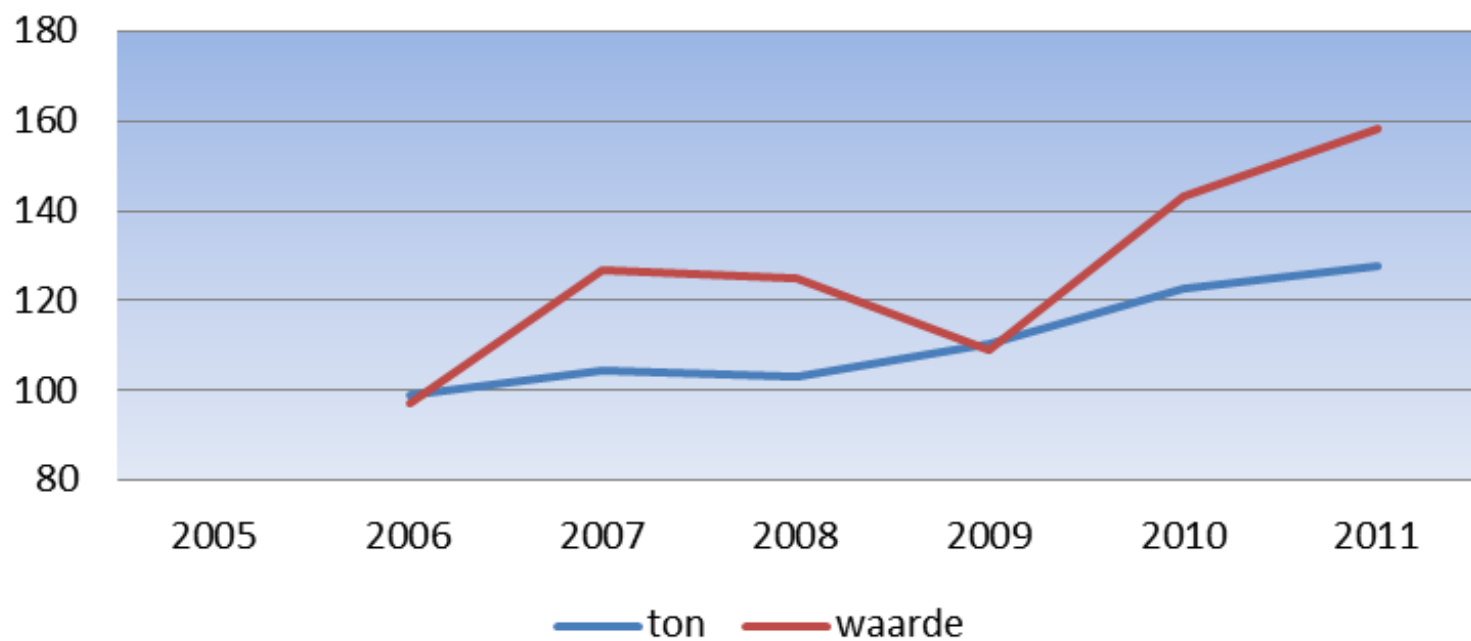
## Jaarlijkse groei export

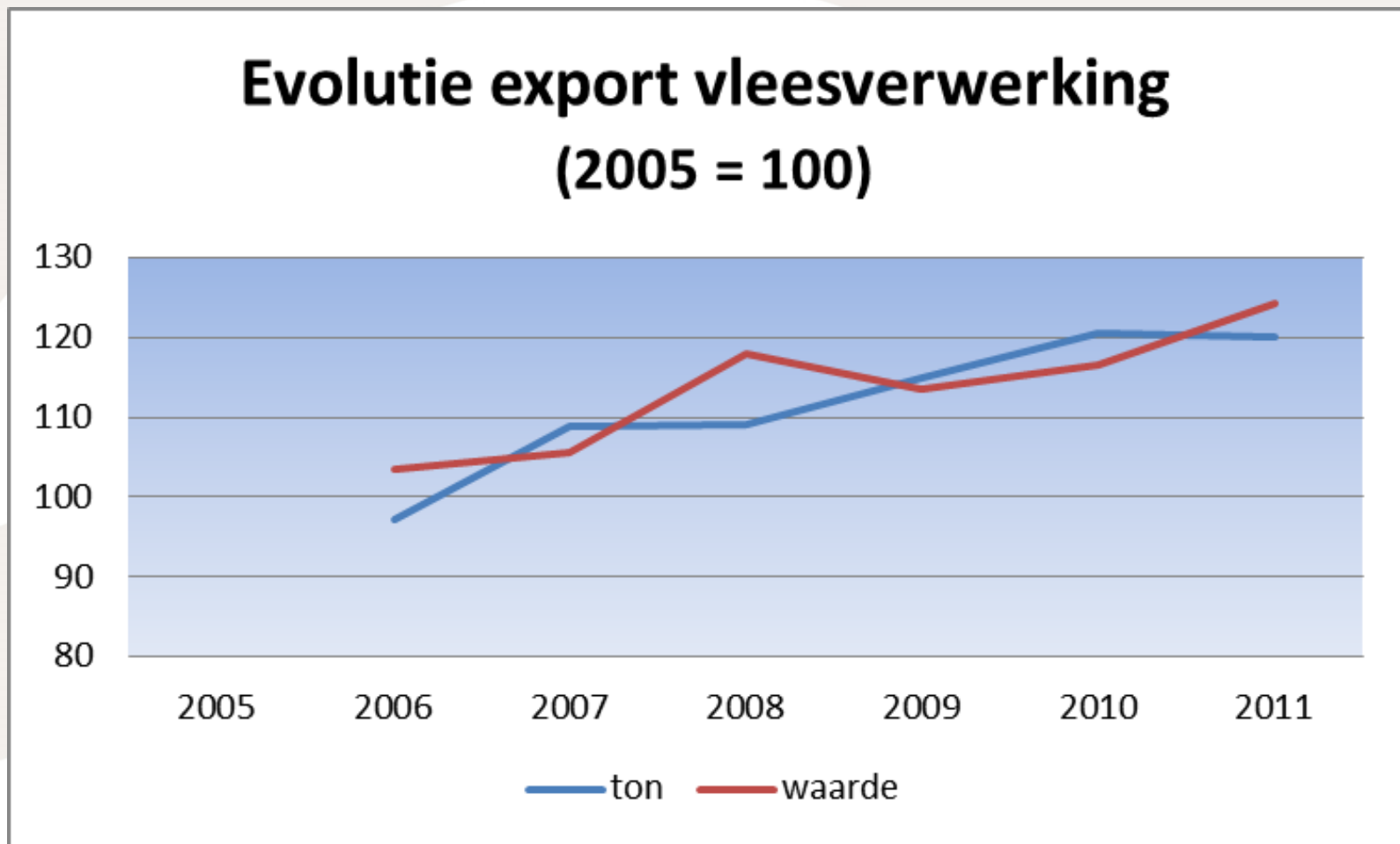


## Export : verdeling over sectoren

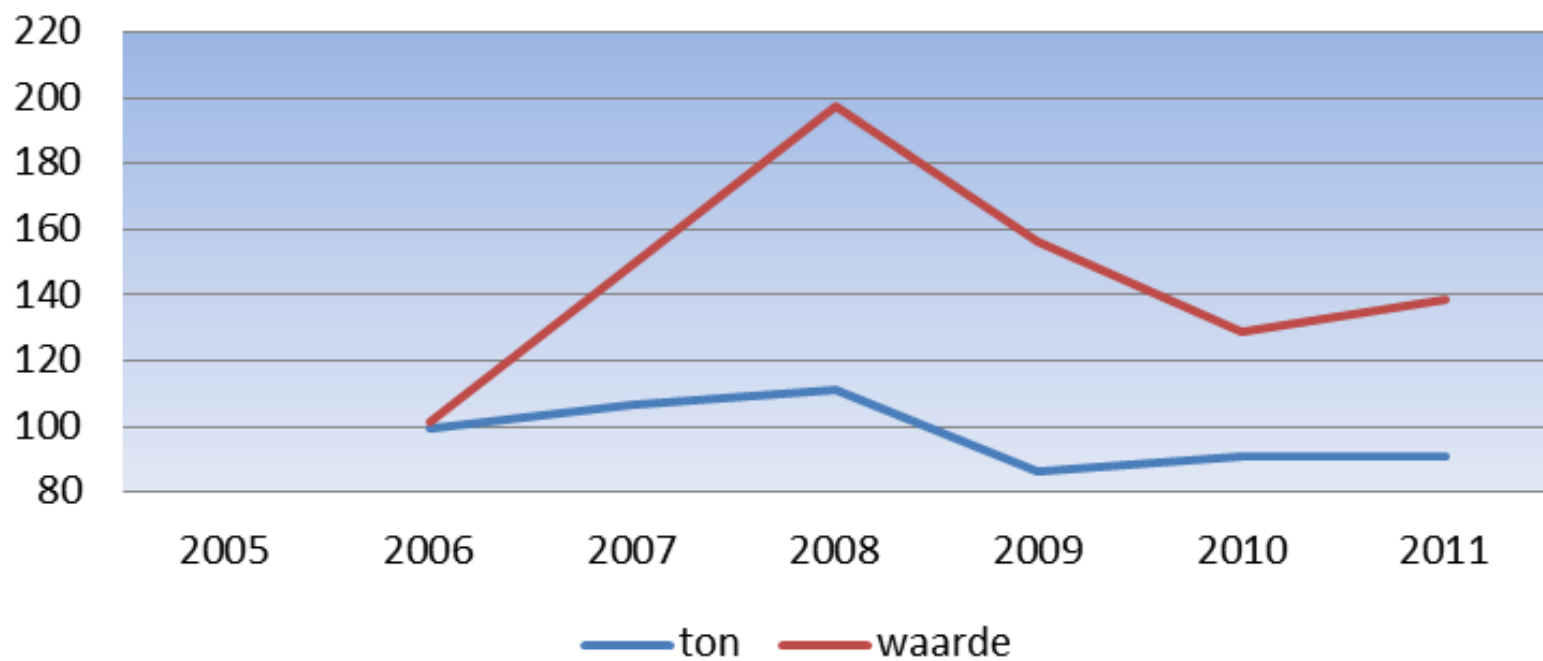


## Grafiek 4 : Evolutie export zuivel (2005 = 100)





## Evolutie export moutvervaardiging (2005 = 100)





<b>BE sectoren met &gt; 10 % van EU export in 2011</b>			Intra	Extra	Totaal
nace 10 31	Verwerkte aardappelen		32,37%	23,50%	30,74%
nace 11 06	Mout		9,58%	38,66%	26,58%
nace 10 42	Margarine & andere spijsvetten		28,16%	10,00%	24,99%
nace 10 32	Groente - en fruitsappen		20,24%	2,15%	17,96%
nace 10 39	Groenten & fruit		15,84%	7,51%	14,41%
nace 11 05	Bier		18,86%	7,86%	14,34%
nace 10 72	Beschuit, biscuit e.a. houdbaar banketbakkerswerk		15,90%	7,35%	14,09%
nace 10 91	Veevoeders		13,25%	13,22%	13,24%
nace 10 52	Consumptie -ijs		14,47%	3,87%	13,21%
Nace 10 82	Cacao, chocolade & suikerwerk		14,24%	10,25%	13,21%
nace 10 61	Maalderijproducten		12,63%	7,94%	11,69%

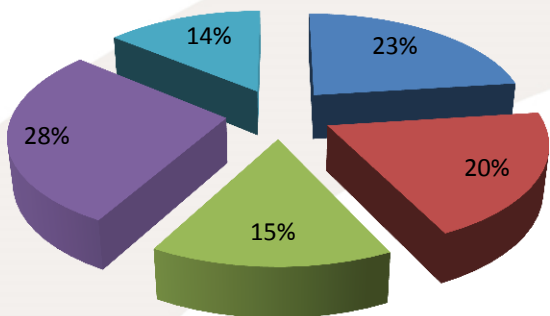
<b>PARTNER \ INDICATORS</b>	<b>in € 1.000</b>	<b>in %</b>
EUROPEAN UNION	20.691.034	86,01
EXTRA-EUROPEAN UNION	3.364.504	13,99
<b>TOTAL</b>	<b>24.055.537</b>	<b>100,00</b>
<b>PARTNER \ INDICATORS</b>	<b>in € 1.000</b>	<b>in %</b>
France	5.524.987	22,97
Netherlands	4.785.804	19,89
Germany	3.630.307	15,09
Utd. Kingdom	2.110.407	8,77
Italy	1.068.645	4,44

**Aandeel in EU export voeding & dranken**

	totaal		intra EU		extra EU
DE	16,57%	DE	17,98%	FR	17,44%
NL	14,46%	NL	14,88%	NL	13,31%
FR	13,70%	FR	12,31%	DE	12,78%
<b>BE</b>	<b>8,54%</b>	<b>BE</b>	<b>9,87%</b>	IT	10,72%
IT	8,41%	IT	7,56%	UK	9,35%
ES	7,13%	ES	6,86%	ES	7,87%
UK	6,57%	UK	5,53%	DK	5,26%
DK	4,44%	DK	4,13%	<b>BE</b>	<b>4,97%</b>
POL	4,20%	POL	4,47%	POL	3,48%
IRL	3,01%	IRL	3,13%	IRL	2,69%

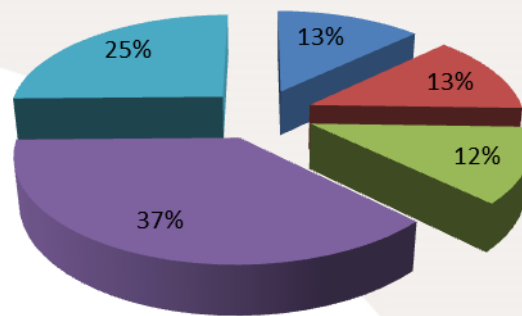
### BE Export naar bestemming

■ France ■ Netherlands ■ Fr Germany ■ Rest ■ Extra



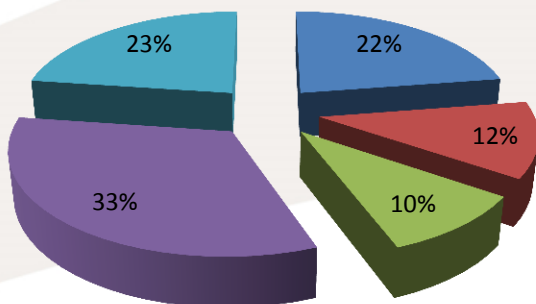
### FR Export naar bestemming

■ Fr Germany ■ Belgium ■ Italy ■ Rest ■ Extra



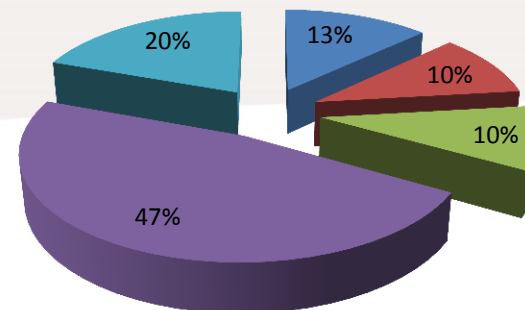
### NL Export naar bestemming

■ Fr Germany ■ Belgium ■ France ■ Rest ■ Extra



### DE Export naar bestemming

■ Netherlands ■ France ■ Italy ■ Rest ■ Extra



**LUC OGIERS**  
**+ 32 (02) 277 71 84**  
[luc.ogiers@economie.fgov.be](mailto:luc.ogiers@economie.fgov.be)